

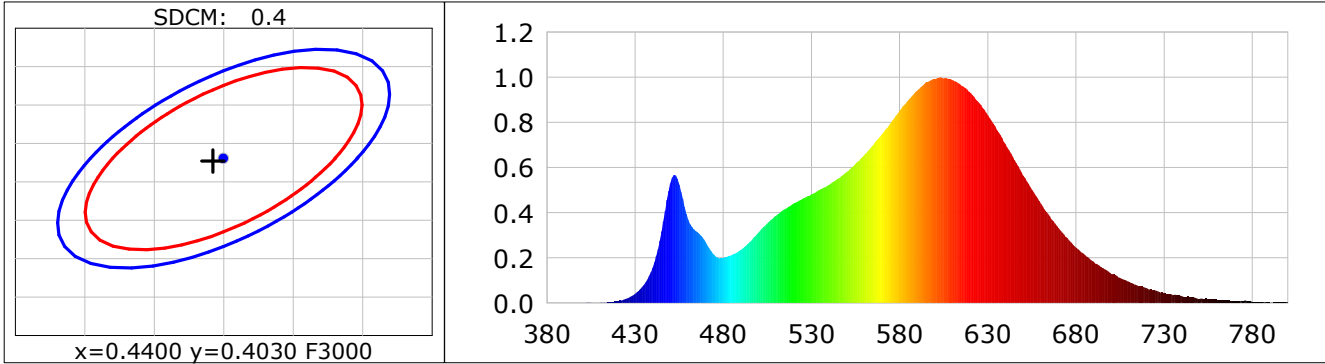
## Lightsource Test Report

**Product Infomation**

Product Category: LED STRIP	Product Type: LED STRIP
Product Spec: BILY 3	Product Number: 301
Manufacturer: TECSOLEED S.L.	Buyer: TECSOLEED S.L.

**CIE Colorimetric Parameters**

Chromaticity coordinates:  $x=0.4392$   $y=0.4027$   $u(u')=0.2527$   $v=0.3475$   $v'=0.5212$   
 CCT:  $T_c=2951K$  ( $duv=-0.00085$ )      Color Ratio:  $R=0.234$   $G=0.739$   $B=0.027$   
 Peak Wavelength: 603.1nm      Half Bandwidth: 120.8nm  
 Dominant Wavelength: 583.3nm      Color Purity: 0.527  
 CRI:  $R_a=82.7$ ,  $avgR(1\sim14)=77.6$ ,  $avgR(1\sim15)=77.3$       TM30:  $R_f=84$ ,  $R_g=95$   
 GAI:  $GAI\_BB\_8=94.8$ ,  $GAI\_BB\_15=102.9$ ,  $GAI\_EES=53.1$   
 R1 =82    R2 =92    R3 =95    R4 =81    R5 =82    R6 =91    R7 =80    R8 =58  
 R9 =7    R10=83    R11=80    R12=73    R13=84    R14=98    R15=74  
 Color Quality Scale:  $Q_a=82.5$ ,  $Q_f=84.2$ ,  $Q_p=83.7$ ,  $Q_g=91.0$   
 Q1 =78    Q2 =94    Q3 =84    Q4 =80    Q5 =83    Q6 =84    Q7 =84    Q8 =86  
 Q9 =95    Q10=91    Q11=87    Q12=84    Q13=82    Q14=72    Q15=74



**Photometric Parameters**

Luminous Flux: 1027.1 lm      Efficiency: 118.82 lm/W      Radiant Power: 3.090 W  
 Total mains efficacy: 110.03 lm/W      Energy Efficiency Class: E (EU 2019/2015)

**Electric Parameters**

Voltage: 24.000V      Current: 0.3602A      Power: 8.64W  
 Power Factor: 1.0000      Frequency: 0.00Hz

**Test Infomation**

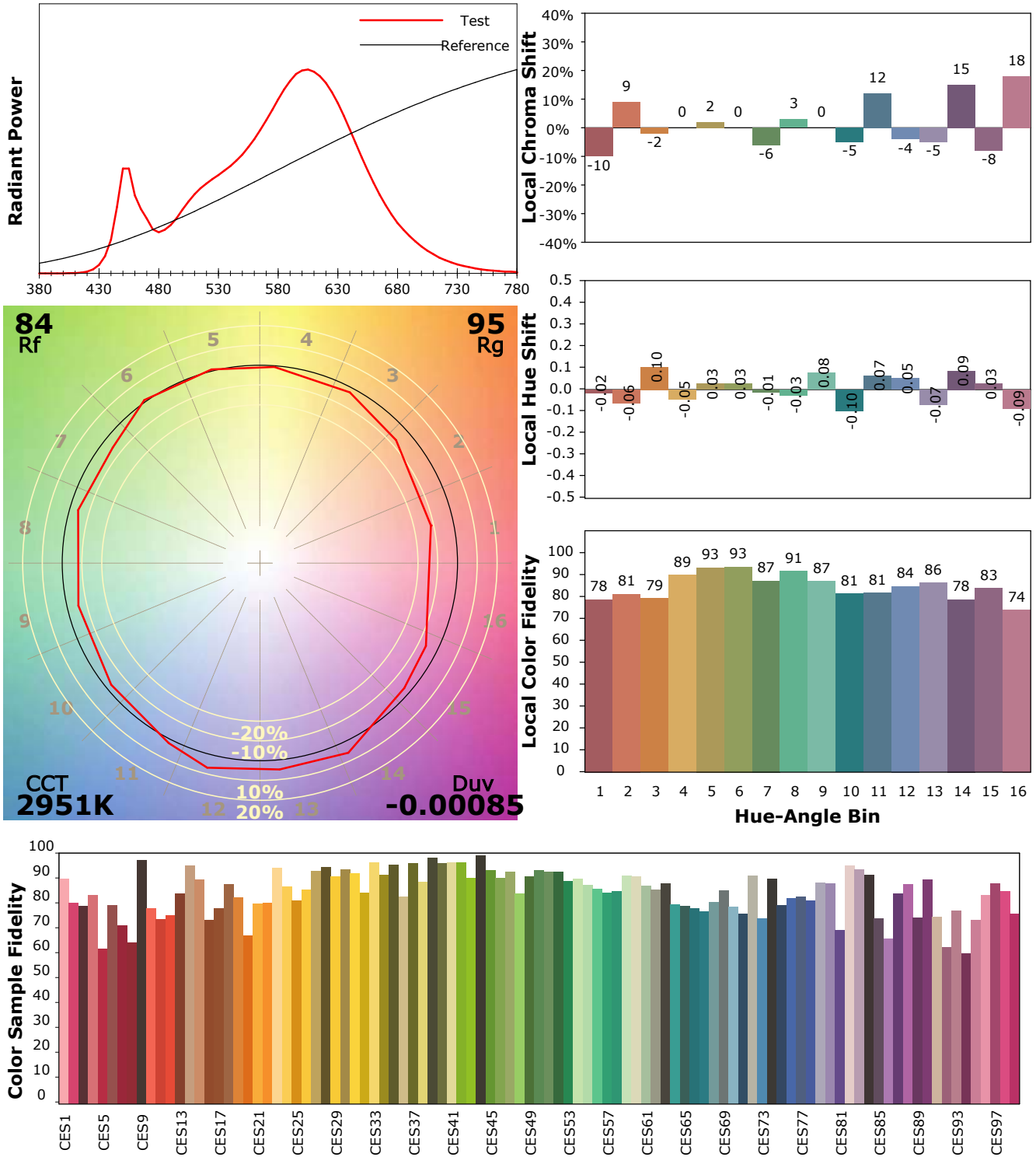
Scan Range: 380~800:1nm      Photometric Method: sphere-spectroradiometer  
 Stabilization Time: 0 Sec    ALC.: 1.0000      Photometric Condition: Sphere diameter: 1.50m, 4PI  
 Max of Signal: 46399 (2203)      CCD Integration Time: 700.09 ms

## IES TM-30-18 Color Rendition Report

### Product Information

Product Category: LED STRIP  
 Product Spec: 21059602440563  
 Manufacturer: TECSOLED S.L.

Product Type: LED STRIP  
 Product Number: 301  
 Buyer: TECSOLED S.L.



Condition: Tx:19.1°C, Ti:18.3°C, R.H.:60%  
 Test Lab: TECSOLED S.L.  
 Operator: JORDAN GIL DIAZ

Test Device: Inventfine CMS-2S (Plus)  
 Test Time: 2021-11-02 10:00:53  
 Inspector: